

NetKconnect

Remote Viewer Server Program
QP-983P

NetKconnect LT

Remote Viewer Terminal
QP-985P



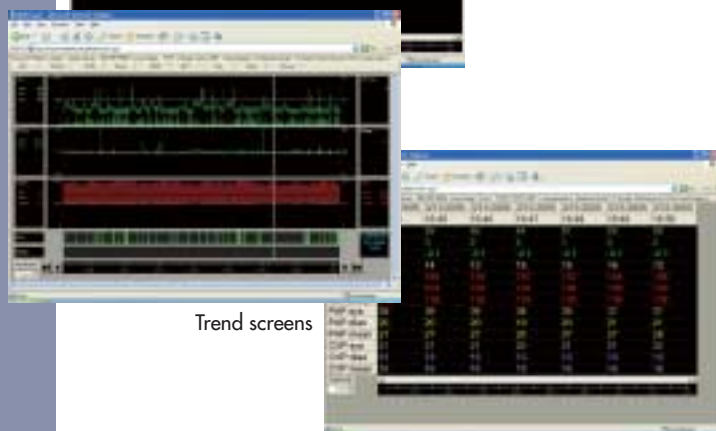
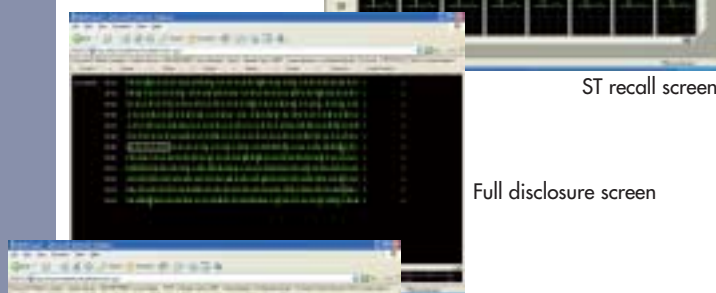
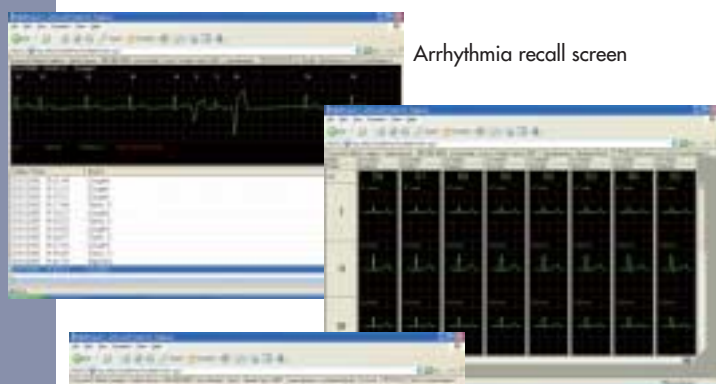
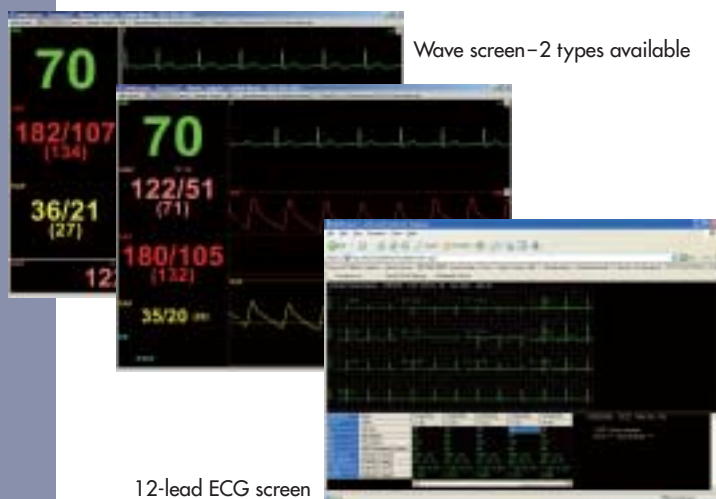
Fighting Disease with Electronics

 **NIHON KOHDEN**

Review necessary data

You can review realtime patient data anytime

Screen Examples



Real-time reviewing

You can review the patient's condition and trends in real-time from a conference room, physician's office, home or even outside the country and discuss treatment with the caregivers who are at the bedside. This enhances your effectiveness and safe patient care.

Easy with **WEB** browser

The web browser shows clear, easy to see waveforms and data just like the bedside monitor. The familiar display provides easy operation for caregivers.

Complete patient data

Patient data includes waveforms, 12-lead ECG, full disclosure ECG*, arrhythmia and ST recall*, trends* and other information*, just like on the bedside monitor. (*Note: A CNS-9701 central monitor is needed to see the review data.)

Guaranteed confidentiality

Confidentiality and controlled access to patient data is important in a network. Administrator can create multiple user accounts and control which users can view which patients. Five accounts are standard. (Only QP-983P)

-anytime, anywhere

and anywhere with a web browser

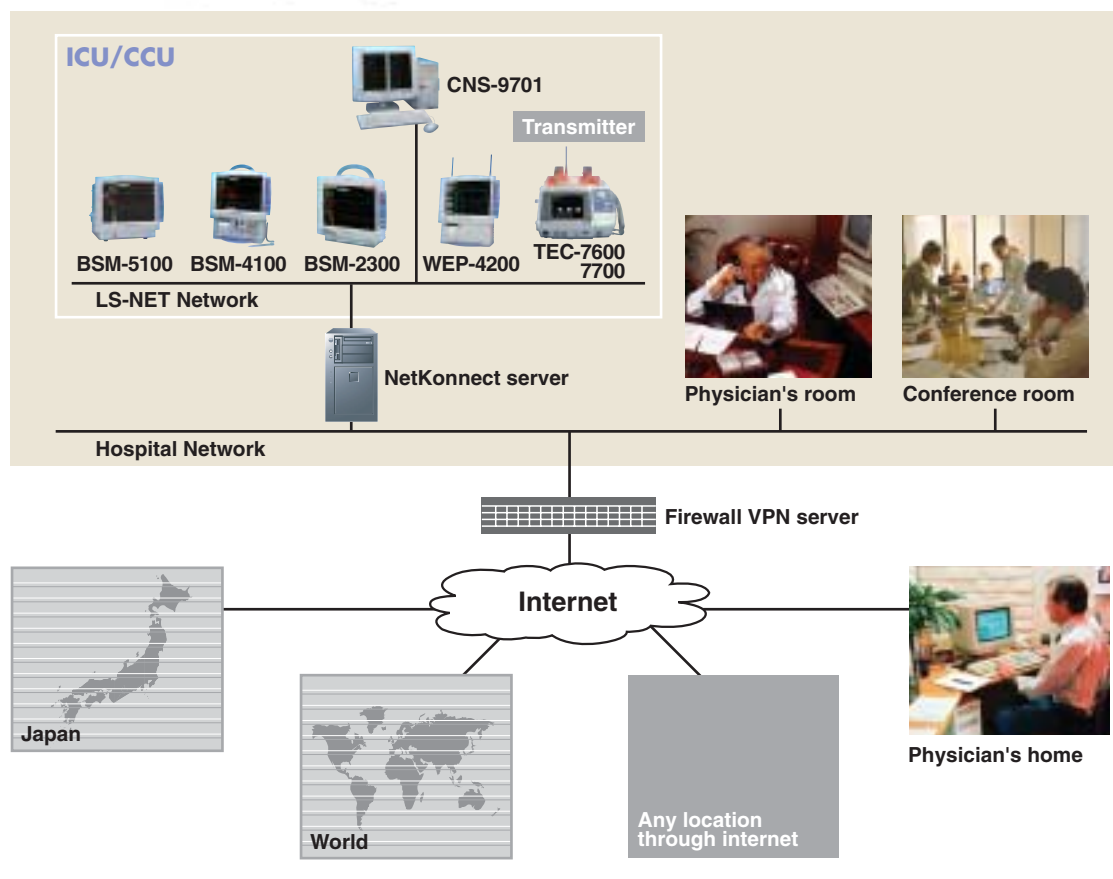
System Composition Examples

QP-983P

NetKconnect

Web server software

that is installed in a server and links an LS-NET (Life Scope patient monitoring Network) to the hospital network. This software allows access to critical patient monitor data in the LS-NET from any PC in the hospital network.

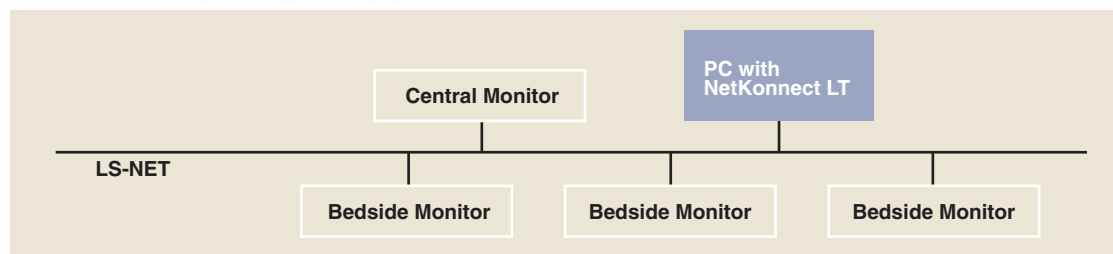


QP-985P

NetKconnect LT

Standalone viewer software

that is installed in a PC. When this PC is directly connected to the LS-NET, you can access critical patient monitor data from the LS-NET.



SPECIFICATIONS

Display Data

Waveform display screen:

Number of waveforms: max 12

Number of numeric data items: max 16

Trendgraph/Trendlist screen:

Trend parameters: All parameters measured by the bedside monitors or transmitters

Number of items: 6 items, 2 events

Display length: 1, 8, 24, 72 hrs

List/NIBP list screen:

Display items: depend on bedside monitor

Hemodynamic list screen:

Display items: depend on bedside monitor

Arrhythmia recall screen:

Display items: depend on bedside monitor

ST recall screen:

Number of display items: max 12 lead

Full disclosure screen:

Number of waveforms: max 6

Note: Optional full disclosure program is required for CNS-9701

12-lead ECG screen:

Display style: Enlarged, comparison

Display waveform: analysis/average

Note: Optional 12 lead interpretation filing program is required for CNS-9701

OPTIONS

You can create multiple user accounts and control which users can view which patients.

5 accounts are standard; 15 or 1000 accounts are optionally available.

BS-981P: 15 user accounts expansion upgrade software.

BS-982P: 1000 user accounts expansion upgrade software (requires BS-981P).

SYSTEM ENVIRONMENT

QP-983P Remote Viewer Server Program

Recommended specifications for server

CPU: Pentium 4, 2 GHz or more

Memory: 1 GB or more

HDD: At least 100 MB free space

Network card: 10 base-T or equivalent, 2 pcs.

Display resolution: 1024×768 dot or more

OS: Microsoft Windows server 2003 standard edition or Windows XP Professional

Required software: Microsoft .NET Framework 1.1, Internet Explorer 5.01 or later

Recommended specifications for client PC for review

CPU: Pentium 3, 1 GHz or more

Memory: 256 MB (512 MB or more recommended)

HDD: At least 10 MB free space

Network card: 10 base-T or equivalent

Display resolution: 1024×768 dot (1280×1024 recommended) or more

OS: Microsoft Windows 2000 Professional or Windows XP Home or Professional

Required software: Microsoft .NET Framework 1.1, Internet Explorer 5.01 or later

QP-985P Remote Viewer Terminal

Recommended specifications for client PC for review

CPU: Pentium 3, 1 GHz or more

Memory: 256 MB (512 MB or more recommended)

HDD: At least 10 MB free space

Network card: 10 base-T or equivalent

Display resolution: 1024×768 dot (1280×1024 recommended) or more

OS: Microsoft Windows 2000 Professional or Windows XP Home or Professional

Required software: Microsoft .NET Framework 1.1, Internet Explorer 5.01 or later

Microsoft and Windows are the registered trademark of Microsoft corporation.

NetKonnnect QP-983P

Web server software that is installed in a server and links an LS-NET (Life Scope patient monitoring Network) to the hospital network. This software allows access to critical patient monitor data in the LS-NET from any PC in the hospital network.

NetKonnnect LT QP-985P

Standalone viewer software that is installed in a PC. When this PC is directly connected to the LS-NET, you can access critical patient monitor data from the LS-NET.

This brochure may be revised or replaced by Nihon Kohden at any time without notice.



NIHON KOHDEN CORPORATION

1-31-4 Nishiochiai, Shinjuku-ku, Tokyo 161-8560, Japan

Phone +81 (3) 5996-8036 Fax +81 (3) 5996-8100

www.nihonkohden.com