

Powerful, Light and Versatile Performance C-Arm

# OSCAR



 **GENORAY**

# OSCAR

SERIES from Genoray

Driven by a passion for X-ray technology, Genoray is committed to leading a healthy lifestyle by constantly improving our products.

GENORAY  
MAKES THE  
INVISIBLE VISIBLE

Genoray is committed to contributing to the health and happiness of human life.

## OSCAR 15

Exceptional, All-round FPD C-Arm

- 15kW HFG
- Flat-Panel Detector (26x26cm, CMOS)
- Wide FOV, low noise
- 150° wide orbital rotation
- DSA (Angiography, Road map, Post processing)



## OSCAR prime

Versatile, Convenient FPD C-Arm

- 5.3kW HFG / 4.5 kW HFG
- Flat-Panel Detector (26x26cm, CMOS), (23x23cm, a-Si)
- Active air cooling system
- Wide FOV, low noise
- 180° wide orbital rotation
- DSA (Angiography, Road map, Post processing)



## OSCAR classic

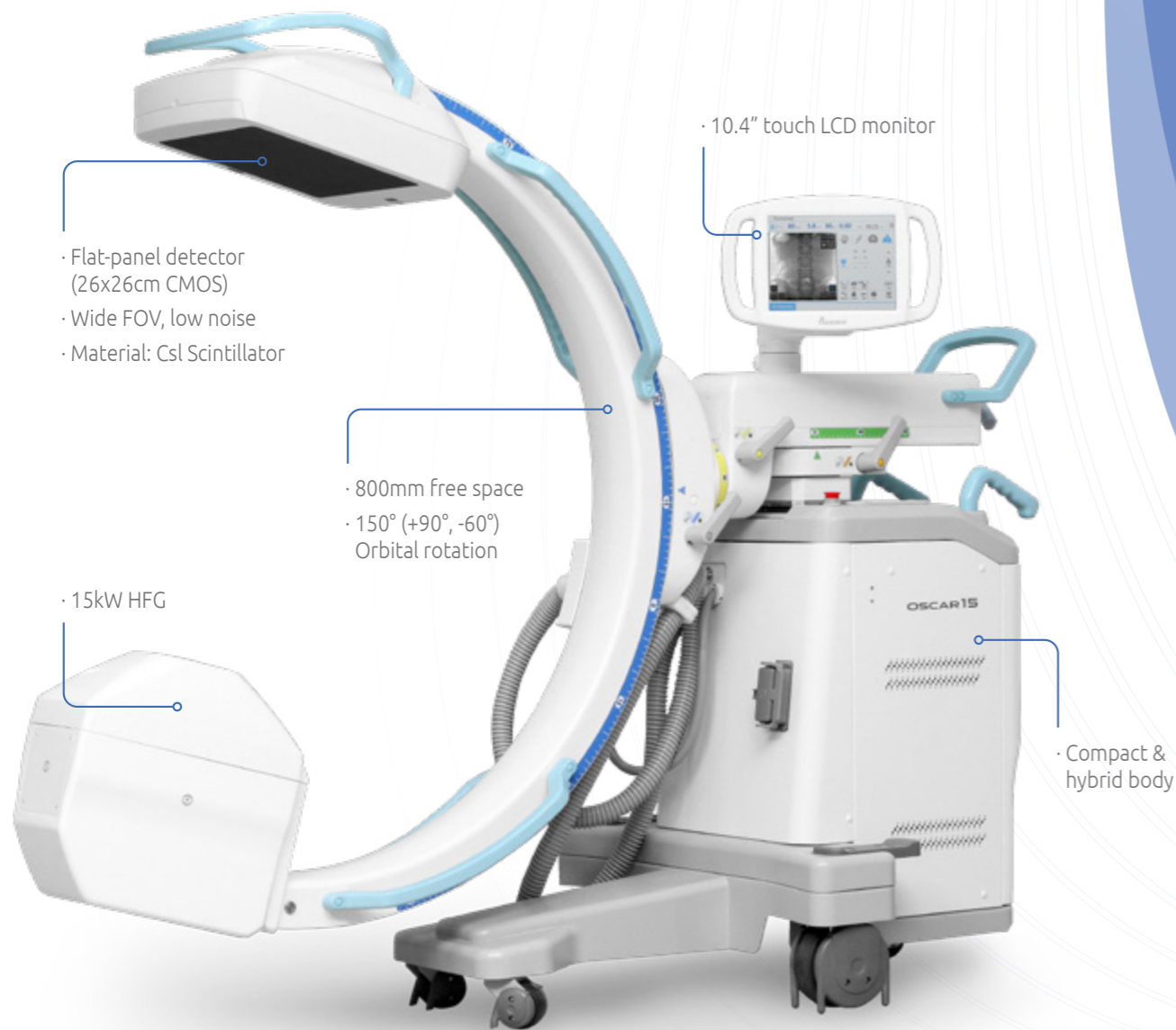
Classical, Well-balanced I.I. C-Arm

- 5.3kW HFG / 4.5kW HFG
- 9" Image Intensifier
- Active air cooling system
- Wide FOV, low noise
- 150° wide orbital rotation
- DSA (Angiography, Road map, Post processing)



# OSCAR 15

The OSCAR 15 fulfills various operational needs with exceptional images produced by a self developed CMOS detector. It is a culmination of decades worth of X-Ray experience at Genoray.



- Flat-panel detector (26x26cm CMOS)
- Wide FOV, low noise
- Material: CsI Scintillator

· 10.4" touch LCD monitor

- 800mm free space
- 150° (+90°, -60°) Orbital rotation

· 15kW HFG

· Compact & hybrid body

## Flat-Panel

- 26x26cm CMOS

## HFG

- 15kW HFG

## DSA

- Angiography
- Road Map
- Post Processing

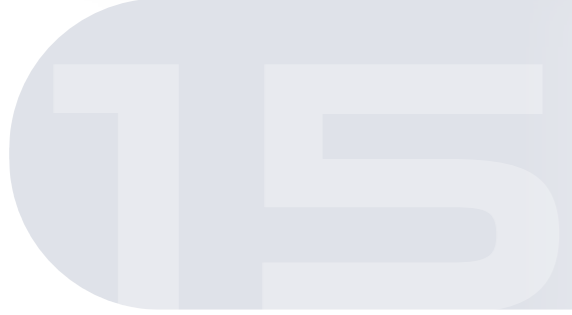


Exceptional,  
All-round FPD C-Arm

- 26x26cm CMOS
- 15kW HFG
- 150° Dynamic Orbital Rotation
- 10.4" Touch Screen
- Laser Pointer
- Low Dose
- Free space 800mm SID 1,000mm
- DSA
- Dual Foot Switch (Shot/Save)
- DICOM 3.0 CD/DVD Burner USB Port
- Wide Monitor
- Waterproof Keyboard & mouse

Wide LCD Monitor

Monitor cart



# OSCAR prime

The OSCAR Prime is a unique system which possesses a 180 degree orbital rotation for maximizing the operational environment. Using the same self-developed CMOS detector, it produces high quality images.



### Flat-Panel

- 26x26cm CMOS
- 23x23cm a-Si

### Wide Orbital Rotation

- 180° (+90°, -90°)

### DSA

- Angiography
- Road Map
- Post Processing

prime

Versatile,  
Convenient FPD C-Arm

- 26x26cm CMOS  
23x23cm a-Si
- 5.3kW HFG  
4.5kW HFG
- 180° Dynamic  
Orbital Rotation
- 10.4" Touch Screen
- Active Air Cooling
- Low Dose
- Free space 800mm  
SID 1,000mm
- DSA
- Dual Foot Switch  
(Shot/Save)
- DICOM 3.0  
CD/DVD Burner  
USB Port
- Wide Monitor
- Waterproof  
Keyboard & Mouse

Wide LCD Monitor

Monitor cart

# OSCAR classic

The Oscar Classic is a highly popular system all over the world with a stable output to produce high quality images. The convenient touch screen and compact design leads to a more convenient way to acquire images.



- 9" image Intensifier
- High resolution images
- Wide FOV, Low Noise

· 10.4" touch LCD monitor

- 1,000mm SID
- 150° (+90°, -60°) Orbital Rotation

- 5.3kW HFG
- 4.5kW HFG

· Active Air Cooling

· Compact & hybrid body

## 9" Image Intensifier

- High-resolution Images

## Wide Orbital Rotation

- 150° (+90°, -60°) Orbital Rotation

## Active Air Cooling System

- To prevent overheating
- To offer longer duration of operation

Classical,  
Well-balanced I.I. C-Arm

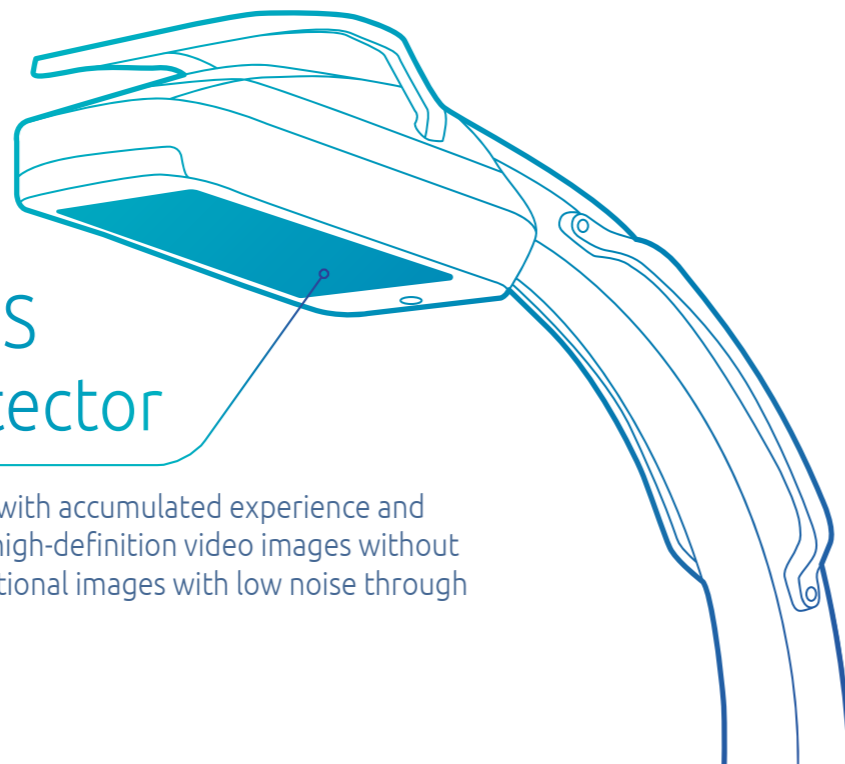
9" Image Intensifier	5.3kW HFG 4.5kW HFG	150° Dynamic Orbital Rotation
10.4" Touch Screen	DSA	Active Air Cooling
Free space 800mm SID 1,000mm	Low Dose	Dual Foot Switch (Shot/Save)
DICOM 3.0 CD/DVD Burner USB Port	Wide Monitor	Waterproof Keyboard & Mouse

Wide LCD Monitor

Monitor cart

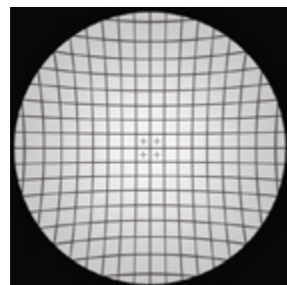
# Genoray CMOS Flat Panel Detector

The CMOS detector, developed with accumulated experience and technology, enables to achieve high-definition video images without afterimages and provides exceptional images with low noise through minimal x-ray exposure.

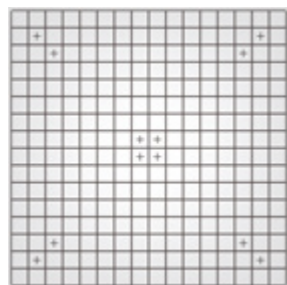


## Exceptional Image Quality

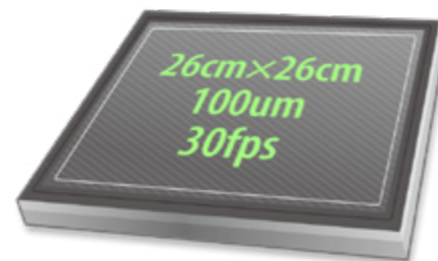
With the optimal flat panel detector size of 26x26cm you will acquire clear image with high quality resolution. It allows accurate diagnosis in all procedures.



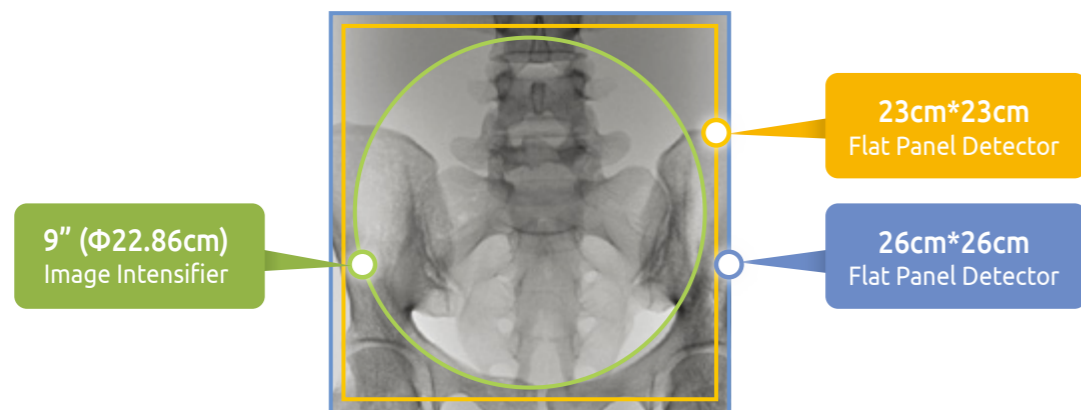
<Image Intensifier>



<FPD>



\* In house manufacturing



\* Covers wider area compared to conventional 9" Image Intensifier

# Live image & Communication

User-friendly 10.4" touch screen operation panel enables two-way communication between doctor and operator by using live image.



## Live image display

Maximize positioning and ease of use  
(Superior communication between physician and staff)  
\* Excellent legibility with Anatomical Preset & Pop-up menu

## Display options

- Monitor : 34" (Color), 19" Dual (Mono)
- L/R Swap, Live Max. mode, Live/Refer. 1:1 mode

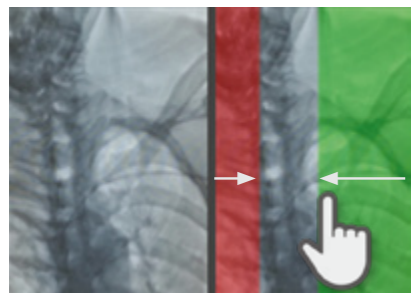
# OSCAR SERIES

## Features

### X-ray Dose Management

#### VIRTUAL COLLIMATION

A virtual collimator allows for the selection of a desired field of view, while reducing the amount of radiation exposure.



#### DOSE STRUCTURED REPORT

The Dose SR allows for an efficient radiological workflow, improves patient care and enhances working conditions.

#### AUTO COLLIMATION

Prevention of unnecessary X-ray exposure by focusing on the area of interest while automatically collimating the surrounding areas.



### Image Processing

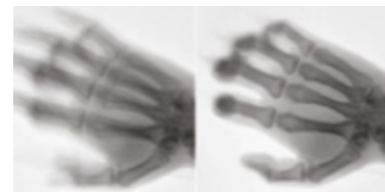
#### EDGE ENHANCEMENT

The edges are enhanced for a more accurate diagnosis



#### MOTION CORRECTION

Detects movement and reduces the blur on the image after exposure.



#### METAL CORRECTION

To prevent over radiation or low quality images interrupted by metal.



## Powerful Software, **ZENIS**

A total solution providing convenient acquisition, storage, management, communication and print with a user friendly interface.

- Convenient diagnostic functions for easy patient / image management
- Accurate diagnostic tools
- Improve the efficiency of your hospital management
- Perfect compatibility with all PACS
- A must have for a digitally equipped hospital
- Convenient communication and management for your customers

#### Image Management

Invert, rotation, zoom In/out, magnifying glass and etc.

#### Measurement & Annotation

Measurement of length and angle  
Mark line, arrow, and characters

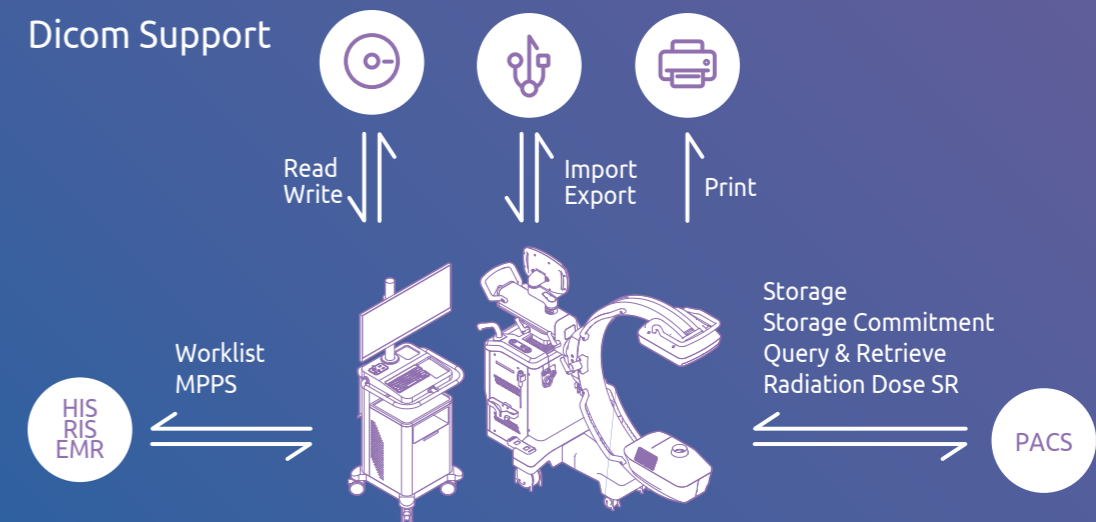
#### DICOM 3.0

Storage service, worklist service

#### Recommended System Requirements for ZENIS

#### Database management In HIPAA Approved Format

### Dicom Support



# Clinical Data

Providing excellent diagnostic images through accumulated experience



Pain Management Case



Orthopedics Case



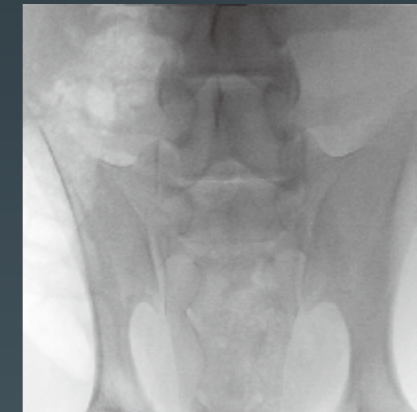
Trauma Case

# DSA (Digital Subtraction Angiography)

DSA assists with the diagnosis and procedures through the information gathered from the vessels after injecting contrast medium.



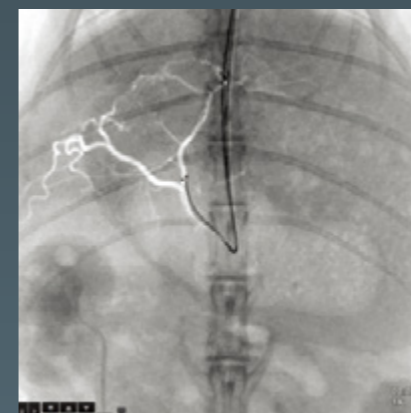
Live image with contrast medium injected



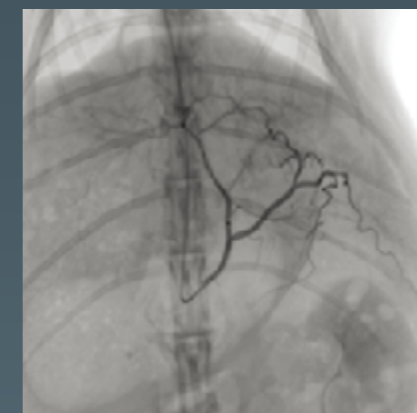
DSA image with vascular parts removed



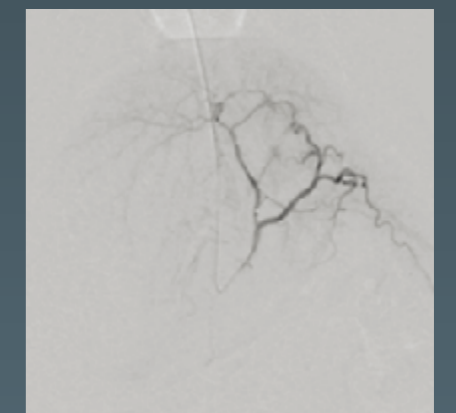
DSA image with non-vascular parts removed



Inserting guide wire using roadmap



Live image with contrast medium injected



DSA image with non-vascular parts removed

## Applications

- General Surgery
- Pain Management
- Neuro & Spine Surgery
- Orthopedic Surgery
- Trauma Procedure
- Urology Procedure
- Cardiac Surgery
- Peripheral Artery Diseases
- Vascular Surgery





**GENORAY Co.,Ltd.**

512, 560, Dunchon-daero, Jungwon-gu,  
Seongnam-si, Gyeonggi-do, 13230, Korea  
Tel. +82-31-5178-5500 Fax. +82-31-5178-5599  
genoray@genoray.com  
www.genoray.com

**GENORAY America Inc.**

147 E. Bristol Lane Orange, CA 92865 USA  
Tel. +1-855-436-6729 Fax. +1-714-786-8919  
inquiry@genorayamerica.com  
www.genorayamerica.com

**GENORAY EU GmbH**

Jerusalem Str. 14, 10117 Berlin, Germany  
Tel. +49-30-509-694-98 Fax. +49-30-530-198-08  
info@genorayeuropa.com

**GENORAY Japan**

Mismicoach Office Building 2F, Shin-Yokohama 1-4-7 Minato-ku,  
Yokohama City, Kanagawaken, 222-0033, Japan  
Tel. + 81-45-620-4971 Fax. +81-45-620-4972  
Info@genorayjapan.co.jp  
www.genorayjapan.co.jp

